

## WHAT ARE THE BENEFITS OF DENTAL IMPLANTS?

### • Improved comfort and quality of life

#### Chewing efficiency

As they are fixed into the jawbone, implants offer you reliable stability, giving you back the same sensations as with natural teeth. You eat better, enjoy more foods, with better nutrition.

#### Natural speech

Since they leave the palate totally free, implants let you speak naturally.

### • Aesthetics

#### A natural look

A dental prosthesis fixed onto an implant offers a better aesthetic result compared to a natural tooth.

#### Invisible

Implants let you smile, laugh or yawn with no discomfort, without running the risk of showing the hooks or metal parts of your denture.

### • Long-term restoration

#### Security

Dental implants have been shown to be a proven technique with a success rate of over 98%.

#### Durability

If you practice good oral hygiene you can keep your implants for many years.

## TESTIMONIES



Dominique, 48 years-old

*«My prosthesis was painful and I had discomfort from heat and cold and when I did sport. Since I've had an implant put in, it's wonderful, I no longer have any of these problems!»*



Jacques, 79 years-old

*«I'm not 20 any more, but I do have all my teeth! Among them, I have 2 implants. For over 10 years now, I haven't given them a second thought. Implants need no more care than teeth. For me, this solution is the best!»*



Anne, 33 years-old

*«Since I lost a tooth in my lower jaw, an implant was the only way to avoid having a bridge, so as not to damage my 2 adjacent teeth. The surgical procedure was very simple and painless. Now I can eat, chew and smile with comfort!»*



Ask your doctor for advice

# ONE OR MORE OF YOUR TEETH ARE MISSING?



## IMPLANTS ARE THE SOLUTION!

**etk**  
A LYRA COMPANY

euroteknika - 726 rue du Général de Gaulle - 74700 Sallanches - France  
T : +33 (0)4 50 91 49 20  
[www.etk.dental](http://www.etk.dental)

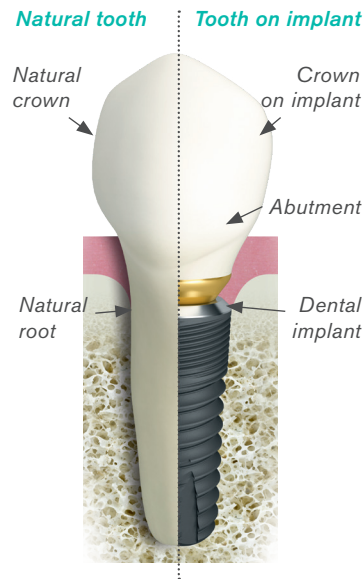
euroteknika implants are medical devices of Class IIb (European Directive 93/42/CEE) comply with the standards of conformity and CE0459 marking carrier. Read carefully the instructions for use and user manual.  
DOC\_ETK\_FP\_GB\_i01\_2018\_12

**etk**  
A LYRA COMPANY

## WHAT IS A DENTAL IMPLANT?

Implant treatment consists of **replacing a lost natural root by an artificial root**. This artificial root supports the prosthesis without using the adjacent teeth, which are kept intact.

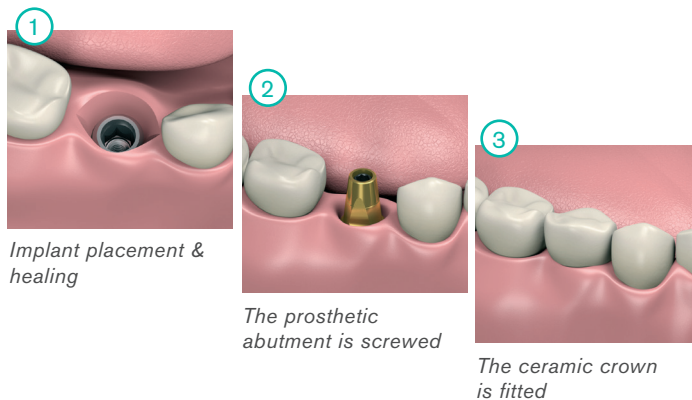
Dental implants can be placed **into the jawbone to replace one or more teeth**. They can also be used to replace a removable prosthesis by a fixed prosthesis.



*An alternative to tooth-supported bridges or a solution to stabilize a removable prosthesis, implants allow you to preserve your natural teeth and to maintain the bone. Furthermore, they give back to the tooth a function close to its natural function (chewing efficiency).*

*You will forget you have...an implant!*

**Example: replacement of one tooth**



## ADVANTAGES OF DENTAL IMPLANTS COMPARED WITH OTHER DENTAL PROSTHESIS

### • Tooth preservation

Usually, a lost tooth is replaced by a denture supported by the adjacent teeth or by hooks.

In both cases, teeth are degraded in the long term; hooks damage the enamel, and the adjacent teeth need to be cut down to support the denture.

Furthermore, the roots of the teeth that support the denture have to withstand greater chewing forces. It is not uncommon to lose the teeth supporting such a denture.

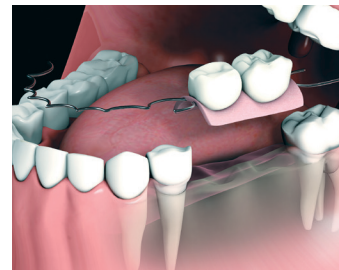
### • Bone preservation

As soon as a tooth is missing, a process of bone resorption begins under the prosthesis and may compromise its long-term adaptation.

At the stage of advanced bone resorption, ie when the tooth has been missing for a long time, it is even more difficult to place implants as the bone volume to anchor them is no longer sufficient.



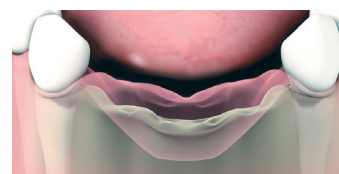
Cemented bridge



Removable prosthesis (hooks)



Cemented prosthesis



Bone resorption

## FREQUENTLY ASKED QUESTIONS ABOUT DENTAL IMPLANTS

### • What are the different stages of the treatment?

After validation of the treatment planning by your practitioner, it is carried out in 3 main steps:

- Placement of the implant/s
- Gingival healing
- Final prosthesis seating

### • How long does this treatment take?

The duration varies according to the extent of the surgical procedure and the type of prosthesis placed; the treatment usually takes a few months to complete.

In some cases, the prosthesis can be fitted right after the implant placement.

### • Is it painful?

To avoid sensitivity or pain, the implant is surgically inserted under local anesthetic, and your doctor will prescribe a suitable premedication for you. In most cases, you can go about your everyday activities the next day: work, sport, leisure...

### • What are implants made of? Where do their materials come from?

Dental implants and related prosthetic components are made of medical titanium in accordance with ISO 5832 and ISO 10993. The origin of material is controlled, certified and traceable for any batch complying with ISO 13485, ISO 9001 and 93/42/EEC standards.

### • What is the success rate?

The current success rate is over 98%.

### • How much does the treatment cost?

Treatment fees depend on several factors:

- The number of teeth to replace
- The number of implants to place
- The complexity of the case to be treated
- The type of prosthesis to place

Therefore, you have to ask your dentist for a quote for surgery (implant placement) and for prosthetics (crown or denture) so that he can provide you with a solution suitable for your budget.